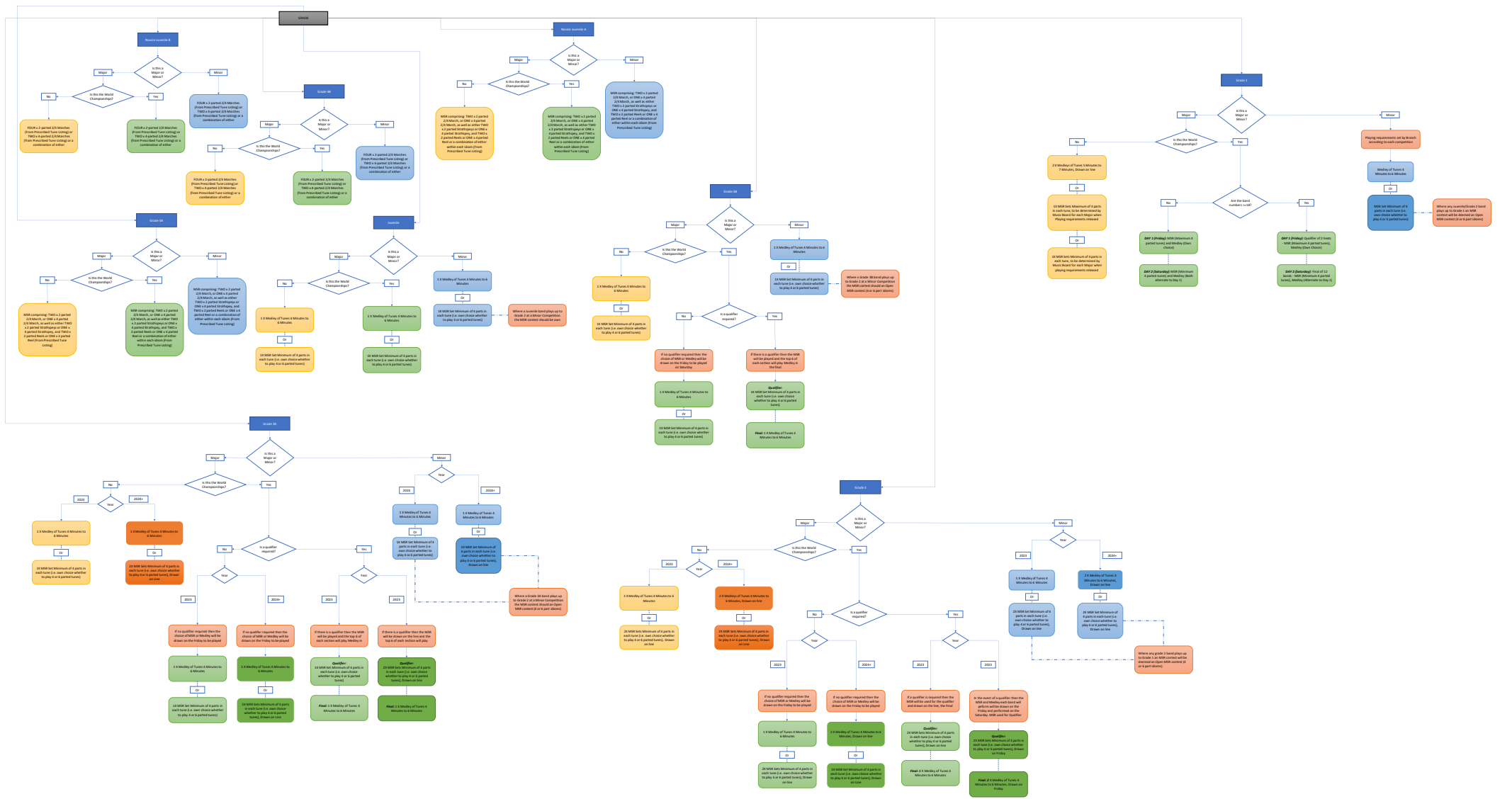


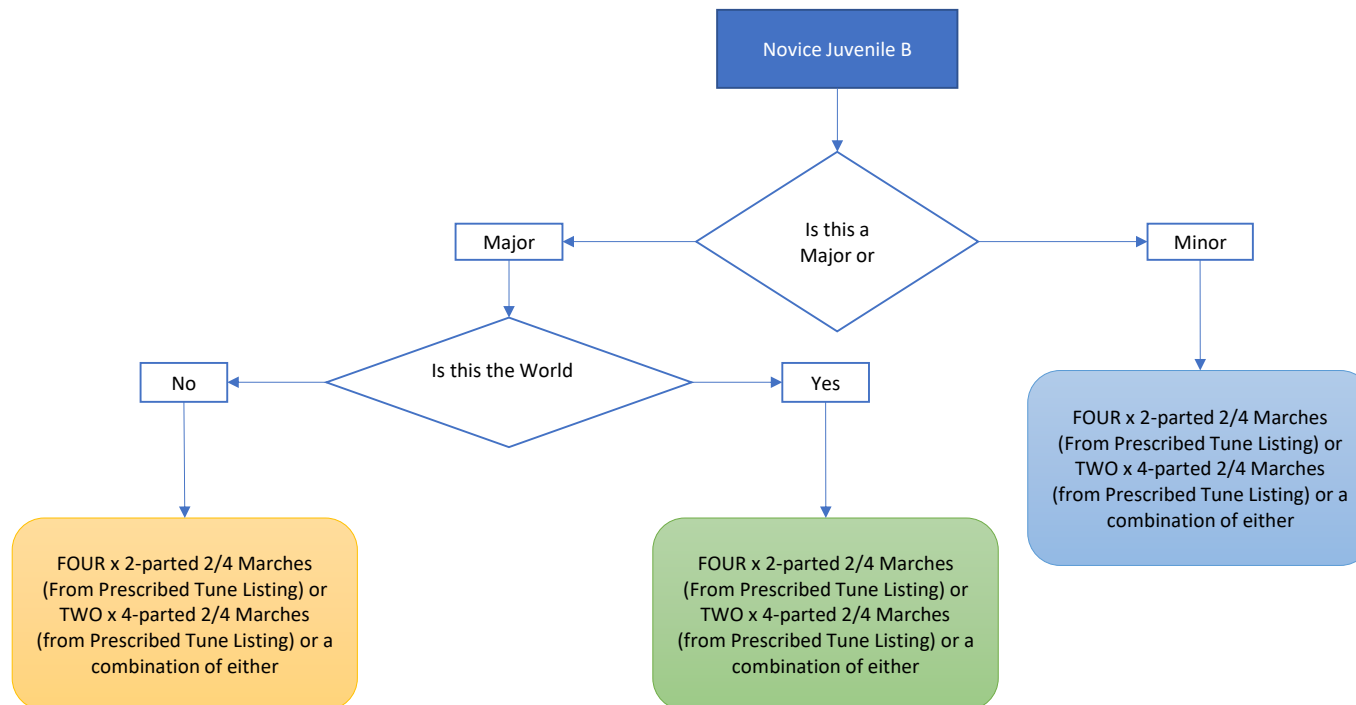
Grade	Current Playing Requirements	Proposed Playing Requirements	Minor proposal	World Championships
Grade Novice Juvenile B	FOUR x 2 parted 2/4 Marches	FOUR x 2-parted 2/4 Marches (From Prescribed Tune Listing) or TWO x 4-parted 2/4 Marches (from Prescribed Tune Listing) or a combination of either	FOUR x 2-parted 2/4 Marches (From Prescribed Tune Listing) or TWO x 4-parted 2/4 Marches (from Prescribed Tune Listing) or a combination of either	
Grade 4B	FOUR x 2 parted 2/4 Marches	FOUR x 2-parted 2/4 Marches (From Prescribed Tune Listing) or TWO x 4-parted 2/4 Marches (from Prescribed Tune Listing) or a combination of either	FOUR x 2-parted 2/4 Marches (From Prescribed Tune Listing) or TWO x 4-parted 2/4 Marches (from Prescribed Tune Listing) or a combination of either	
Grade Novice Juvenile A	MSR comprising: TWO x 2 parted 2/4 March, or ONE x 4 parted 2/4 March, as well as either TWO x 2 parted Strathspeys or ONE x 4 parted Strathspey, and TWO x 2 parted Reels or ONE x 4 parted Reel (From Prescribed Tune Listing)	MSR comprising: TWO x 2 parted 2/4 March, or ONE x 4 parted 2/4 March, as well as either TWO x 2 parted Strathspeys or ONE x 4 parted Strathspey, and TWO x 2 parted Reels or ONE x 4 parted Reel or a combination of either within each idiom (From Prescribed Tune Listing)	MSR comprising: TWO x 2 parted 2/4 March, or ONE x 4 parted 2/4 March, as well as either TWO x 2 parted Strathspeys or ONE x 4 parted Strathspey, and TWO x 2 parted Reels or ONE x 4 parted Reel or a combination of either within each idiom (From Prescribed Tune Listing)	
Grade 4A	MSR comprising: TWO x 2 parted 2/4 March, or ONE x 4 parted 2/4 March, as well as either TWO x 2 parted Strathspeys or ONE x 4 parted Strathspey, and TWO x 2 parted Reels or ONE x 4 parted Reel (From Prescribed Tune Listing)	MSR comprising: TWO x 2 parted 2/4 March, or ONE x 4 parted 2/4 March, as well as either TWO x 2 parted Strathspeys or ONE x 4 parted Strathspey, and TWO x 2 parted Reels or ONE x 4 parted Reel or a combination of either within each idiom (From Prescribed Tune Listing)	MSR comprising: TWO x 2 parted 2/4 March, or ONE x 4 parted 2/4 March, as well as either TWO x 2 parted Strathspeys or ONE x 4 parted Strathspey, and TWO x 2 parted Reels or ONE x 4 parted Reel or a combination of either within each idiom (From Prescribed Tune Listing)	
Grade Juvenile	1 X Medley of Tunes 3 Minutes to 5 Minutes Or 1X MSR Set Minimum of 4 parts in each tune (own choice)	1 X Medley of Tunes 4 Minutes to 6 Minutes Or 1X MSR Set Minimum of 4 parts in each tune (i.e. own choice whether to play 4 or 6 parted tunes)	1 X Medley of Tunes 4 Minutes to 6 Minutes Or 1X MSR Set Minimum of 4 parts in each tune (i.e. own choice whether to play 4 or 6 parted tunes) Where a Juvenile band plays up to Grade 2 the MSR contest should be own choice	
Grade 3B	1 X Medley of Tunes 3 Minutes to 5 Minutes Or 1X MSR Set Minimum of 4 parts in each tune (own choice)	1 X Medley of Tunes 4 Minutes to 6 Minutes Or 1X MSR Set Minimum of 4 parts in each tune (i.e. own choice whether to play 4 or 6 parted tunes)		If no qualifier required then the choice of MSR or Medley will be drawn on the Friday to be played on Saturday If there is a qualifier then the MSR will be played and the top 6 of each section will play Medley in the final
Grade 3A	1 X Medley of Tunes 3 Minutes to 5 Minutes Or 1X MSR Set Minimum of 4 parts in each tune (own choice)	1 X Medley of Tunes 4 Minutes to 6 Minutes Or 1X MSR Set Minimum of 4 parts in each tune (own choice) 2 X MSR Sets Minimum of 4 parted tunes (Drawn on line)		If no qualifier required then the choice of MSR or Medley will be drawn on the Friday to be played on Saturday If there is a qualifier then the MSR will be played and the top 6 of each section will play Medley in the final If there is a qualifier then the MSR will be drawn on the line and the top 6 of each section will play Medley in the final
Grade 2	1 X Medley of Tunes 4 Minutes to 6 Minutes Or 2X MSR Set Minimum 4 Parted Tunes (Drawn on line)	1 X Medley of Tunes 4 Minutes to 6 Minutes 2 X Medleys of Tunes 4 Minutes to 6 Minutes (Drawn on line) Or 2X MSR Sets Minimum 4 Parted tunes (Drawn on line)	Where any grade 2 band plays up to grade 1 an MSR contest will be deemed an Open MSR contest (4 or 6 part idioms)	If no qualifier required then the choice of MSR or Medley in a straight final will be drawn on the Friday to be played on Saturday (and drawn on the line for the MSR) If a qualifier is required then the MSR will be used for the qualifier and drawn on the line, the Final will be Medley In the event of a qualifier then the MSR and Medley each band will perform will be drawn on the Friday and performed on the Saturday
Grade 1	2 x Medleys of tunes (5-7 mins) (Drawn on line) Or 2 x MSR min 4 parted tunes (Drawn on line)	2 x Medleys of tunes (5-7 mins) (drawn on line) Or 1 x MSR Set (Maximum 4 parted tunes) or 1 x MSR Set (Minimum 4 parted tunes) (playing requirement for each Major will be determined by Music Board prior to season)		
Grade 1 (Worlds) with Qualifier (> or = 18 bands)	Day 1 (Friday) Qualifier of 2 heats - MSR (Own choice), Medley (Own Choice) Day 2 (Saturday) Final of 12 bands - MSR (Alternate to Friday), Medley (Alternate to Friday)	Day 1 (Friday) Qualifier of 2 heats - MSR (Maximum 4 parted tunes (4 parted not 2x2)), Medley (Own Choice) Day 2 (Saturday) Final of 12 bands - MSR (Minimum 4 parted tunes), Medley (Alternate to Day 1)	Branches set their own playing requirements according to Competition	
Grade 1 (Worlds) without Qualifier (<18 bands)	Day 1 (Friday) MSR and Medley (Own choice) Day 2 (Saturday) MSR and Medley (Alternate to Day 1)	Day 1 (Friday) MSR (Maximum 4 parted tunes) and Medley (Own choice) Day 2 (Saturday) MSR (Minimum 4 parted tunes) and Medley (Alternate to Day 1)		

Proposal

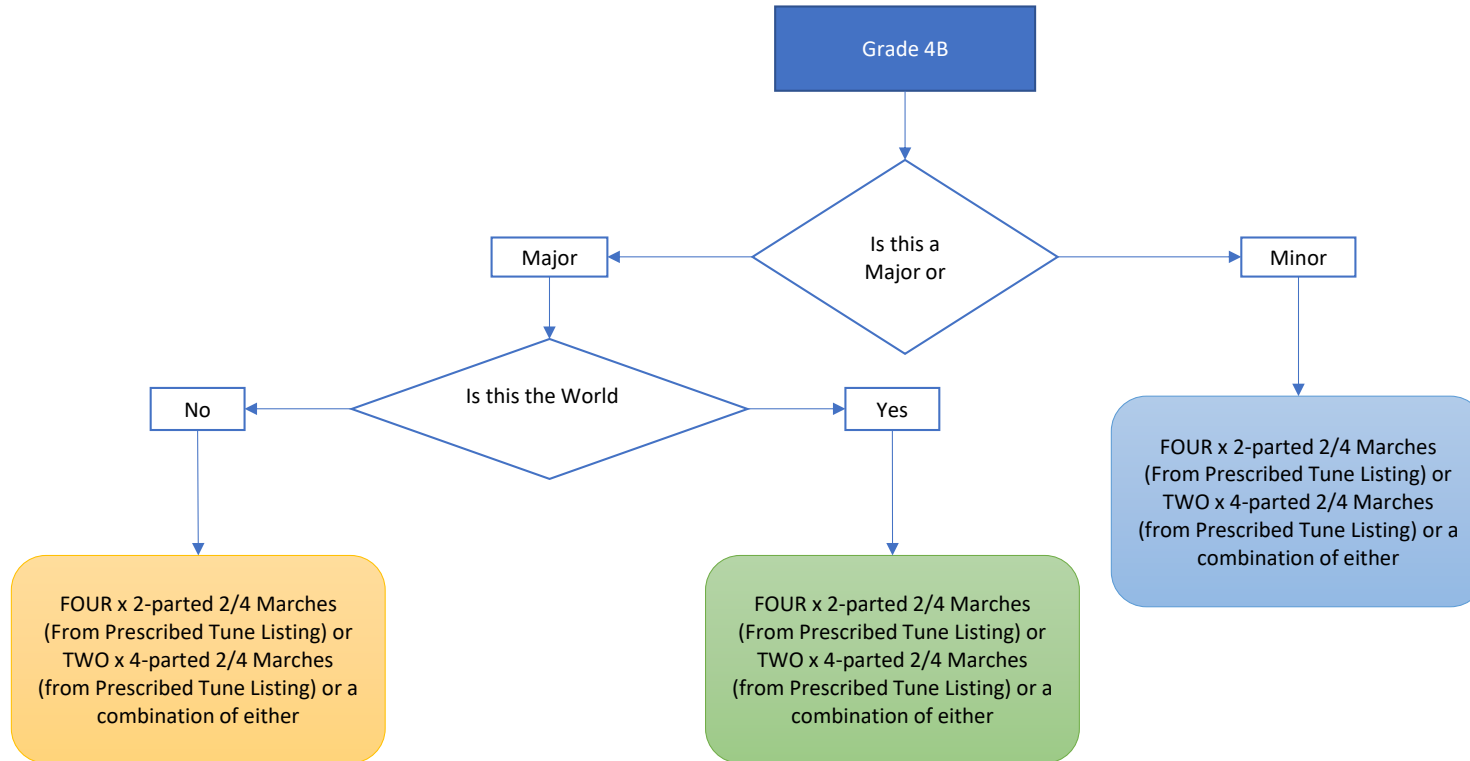
For all Championships, the cut off for a qualifier should be 18 bands or the elapsed time for the grade is no longer than 2 hours. In the event that the cut off is exceeded then we revert to qualifiers with the top 6 from each playing in a final.



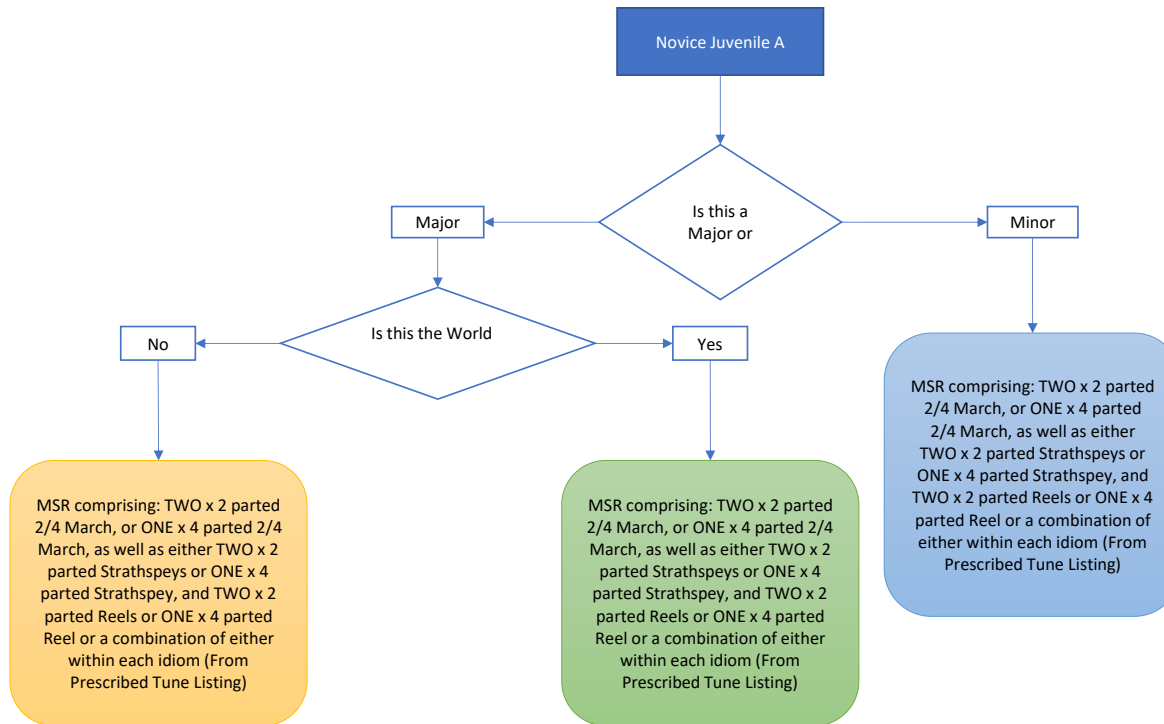
Grade	Current Playing Requirements	Proposed Playing Requirements	Minor proposal	World Championships
Grade Novice Juvenile B	FOUR x 2 parted 2/4 Marches	FOUR x 2-parted 2/4 Marches (From Prescribed Tune Listing) or TWO x 4-parted 2/4 Marches (from Prescribed Tune Listing) or a combination of either	FOUR x 2-parted 2/4 Marches (From Prescribed Tune Listing) or TWO x 4-parted 2/4 Marches (from Prescribed Tune Listing) or a combination of either	FOUR x 2-parted 2/4 Marches (From Prescribed Tune Listing) or TWO x 4-parted 2/4 Marches (from Prescribed Tune Listing) or a combination of either



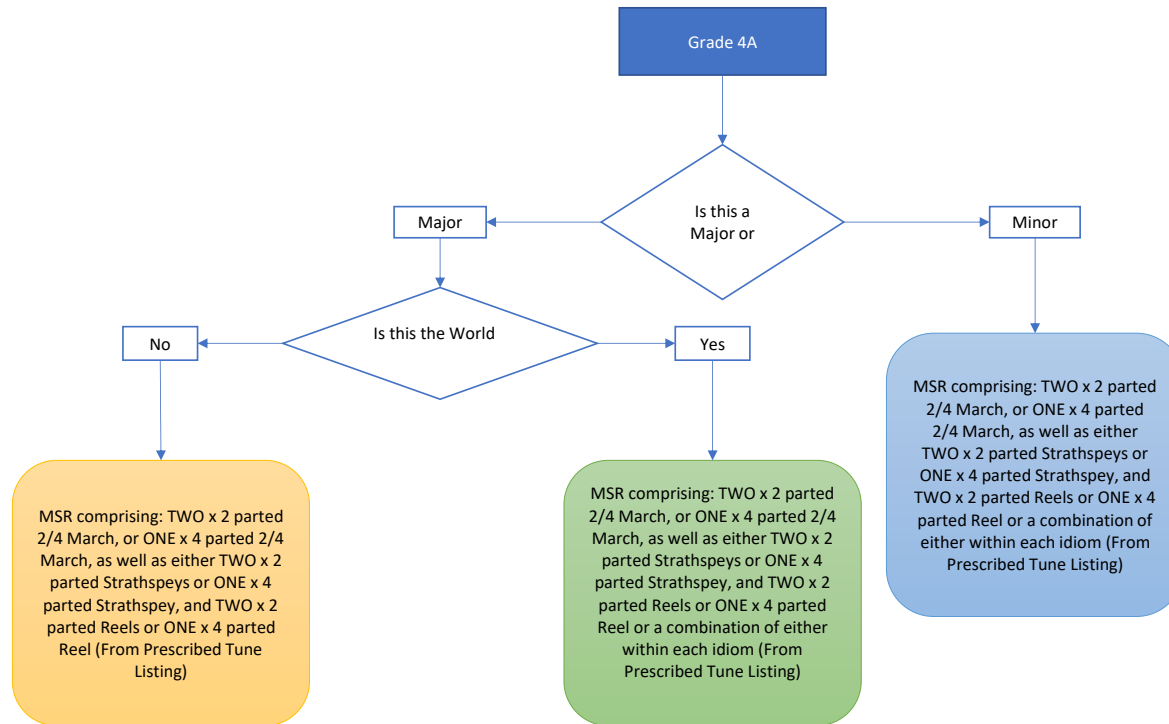
Grade	Current Playing Requirements	Proposed Playing Requirements	Minor proposal	World Championships
Grade 4B	FOUR x 2 parted 2/4 Marches	FOUR x 2-parted 2/4 Marches (From Prescribed Tune Listing) or TWO x 4-parted 2/4 Marches (from Prescribed Tune Listing) or a combination of either	FOUR x 2-parted 2/4 Marches (From Prescribed Tune Listing) or TWO x 4-parted 2/4 Marches (from Prescribed Tune Listing) or a combination of either	



Grade	Current Playing Requirements	Proposed Playing Requirements	Minor proposal	World Championships
Grade Novice Juvenile A	MSR comprising: TWO x 2 parted 2/4 March, or ONE x 4 parted 2/4 March, as well as either TWO x 2 parted Strathspeys or ONE x 4 parted Strathspey, and TWO x 2 parted Reels or ONE x 4 parted Reel (From Prescribed Tune Listing)	MSR comprising: TWO x 2 parted 2/4 March, or ONE x 4 parted 2/4 March, as well as either TWO x 2 parted Strathspeys or ONE x 4 parted Strathspey, and TWO x 2 parted Reels or ONE x 4 parted Reel or a combination of either within each idiom (From Prescribed Tune Listing)	MSR comprising: TWO x 2 parted 2/4 March, or ONE x 4 parted 2/4 March, as well as either TWO x 2 parted Strathspeys or ONE x 4 parted Strathspey, and TWO x 2 parted Reels or ONE x 4 parted Reel or a combination of either within each idiom (From Prescribed Tune Listing)	

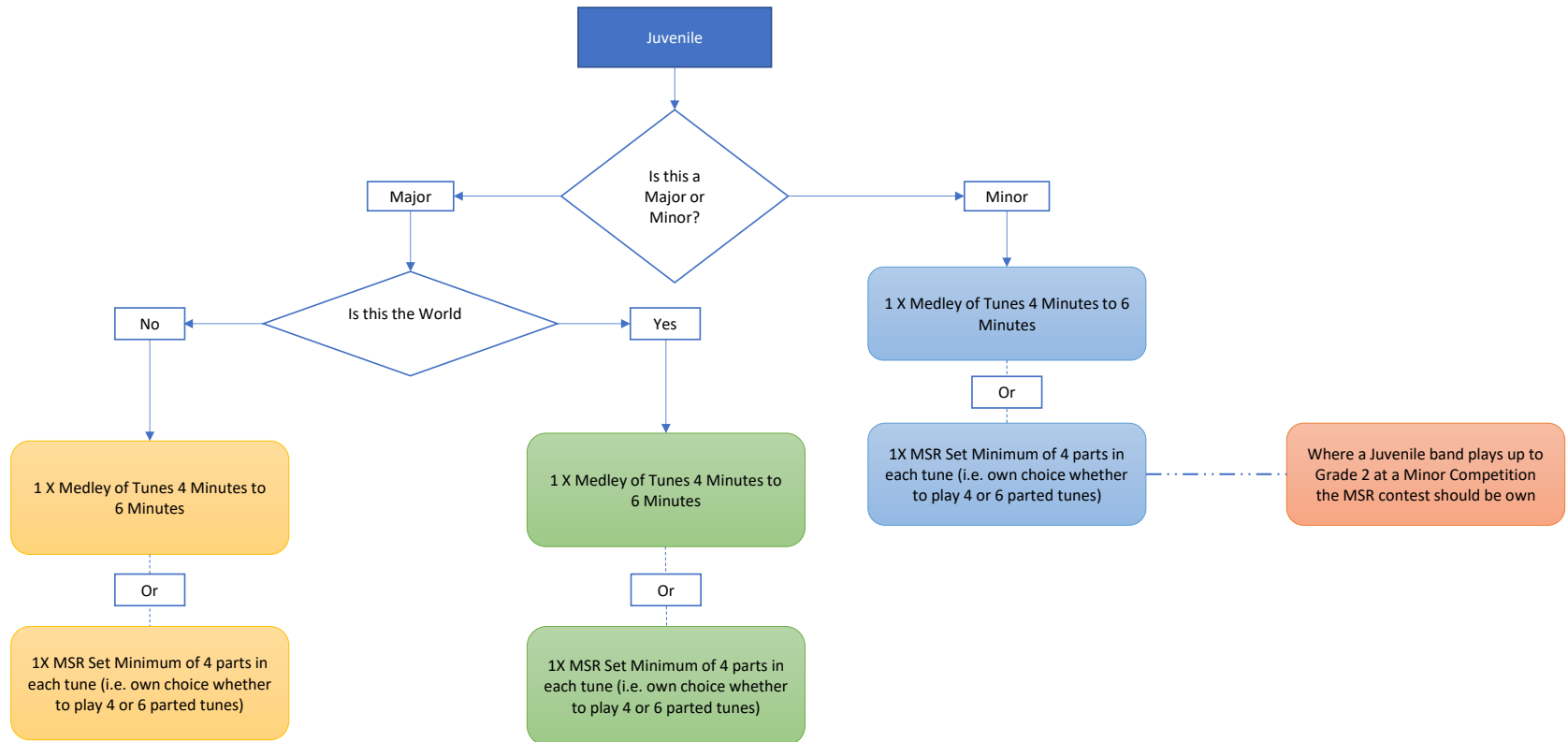


Grade	Current Playing Requirements	Proposed Playing Requirements	Minor proposal	World Championships
Grade Novice Juvenile A	MSR comprising: TWO x 2 parted 2/4 March, or ONE x 4 parted 2/4 March, as well as either TWO x 2 parted Strathspeys or ONE x 4 parted Strathspey, and TWO x 2 parted Reels or ONE x 4 parted Reel (From Prescribed Tune Listing)	MSR comprising: TWO x 2 parted 2/4 March, or ONE x 4 parted 2/4 March, as well as either TWO x 2 parted Strathspeys or ONE x 4 parted Strathspey, and TWO x 2 parted Reels or ONE x 4 parted Reel or a combination of either within each idiom (From Prescribed Tune Listing)	MSR comprising: TWO x 2 parted 2/4 March, or ONE x 4 parted 2/4 March, as well as either TWO x 2 parted Strathspeys or ONE x 4 parted Strathspey, and TWO x 2 parted Reels or ONE x 4 parted Reel or a combination of either within each idiom (From Prescribed Tune Listing)	



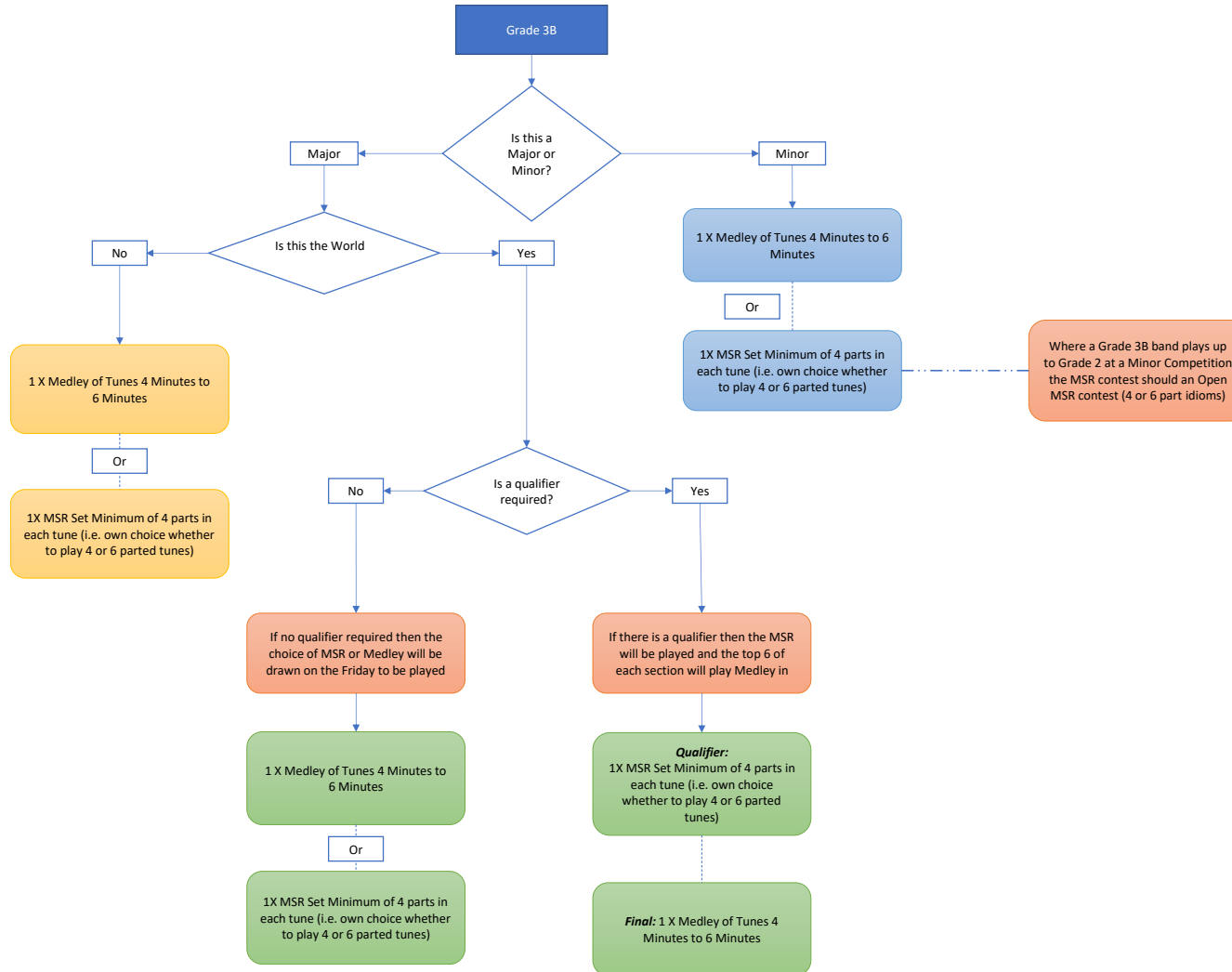
Grade	Current Playing Requirements	Proposed Playing Requirements	Minor proposal	World Championships
Grade Juvenile	1 X Medley of Tunes 3 Minutes to 5 Minutes Or 1X MSR Set Minimum of 4 parts in each tune (own choice)	1 X Medley of Tunes 4 Minutes to 6 Minutes Or 1X MSR Set Minimum of 4 parts in each tune (i.e. own choice whether to play 4 or 6 parted tunes)	1 X Medley of Tunes 4 Minutes to 6 Minutes Or 1X MSR Set Minimum of 4 parts in each tune (i.e. own choice whether to play 4 or 6 parted tunes) Where a Juvenile band plays up to Grade 2 the MSR contest should be own choice	

* Where Minimum 4 parted MSR mentioned these are tunes written as four parts and not 2 x two parted tunes



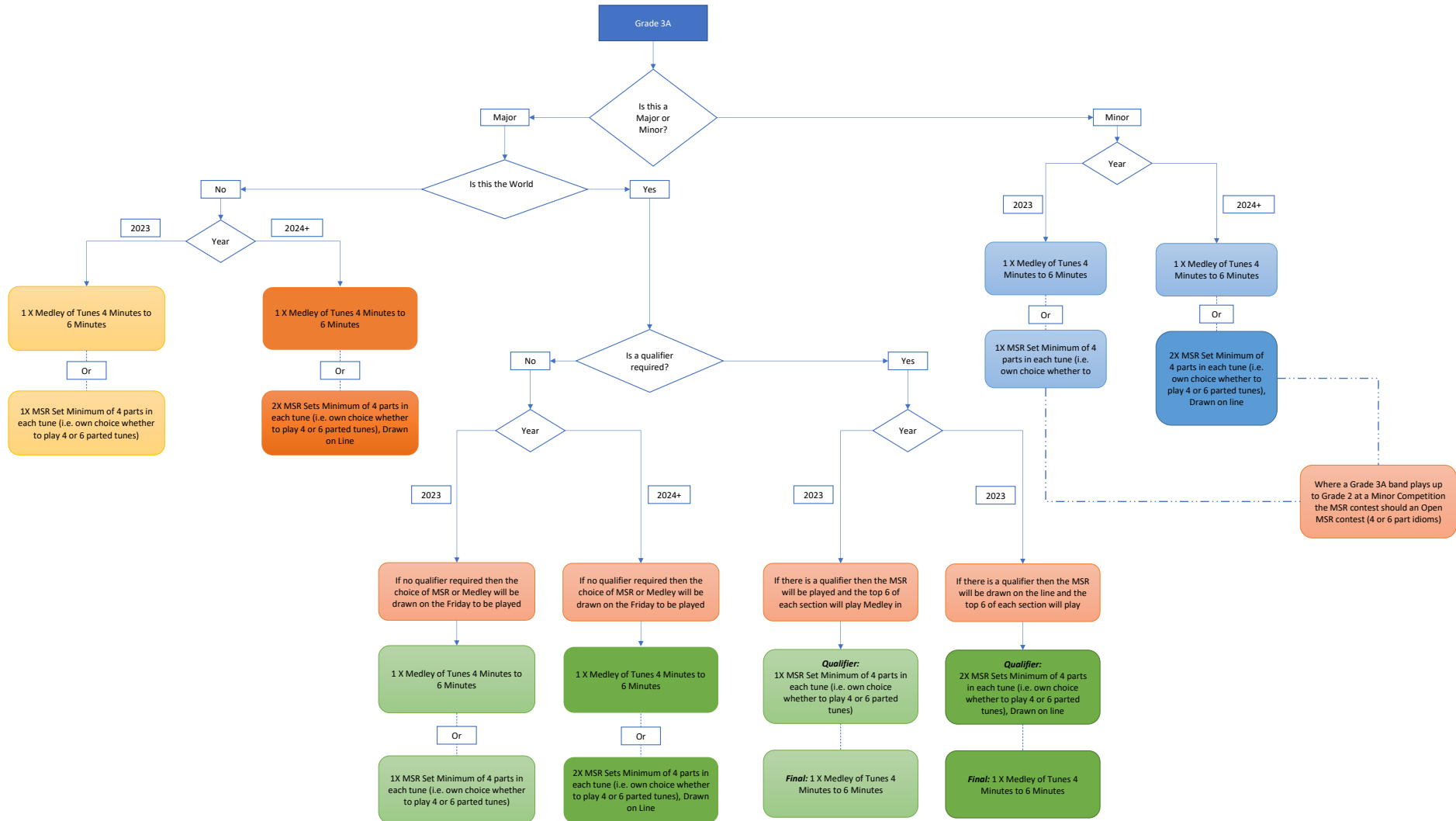
Grade	Current Playing Requirements	Proposed Playing Requirements	Minor proposal	World Championships
Grade 3B	1 X Medley of Tunes 3 Minutes to 5 Minutes Or 1X MSR Set Minimum of 4 parts in each tune (own choice)	1 X Medley of Tunes 4 Minutes to 6 Minutes Or 1X MSR Set Minimum of 4 parts in each tune (i.e. own choice whether to play 4 or 6 parted tunes)		If no qualifier required then the choice of MSR or Medley will be drawn on the Friday to be played on Saturday If there is a qualifier then the MSR will be played and the top 6 of each section will play Medley in the final

* Where Minimum 4 parted MSR mentioned these are tunes written as four parts and not 2 x two parted tunes



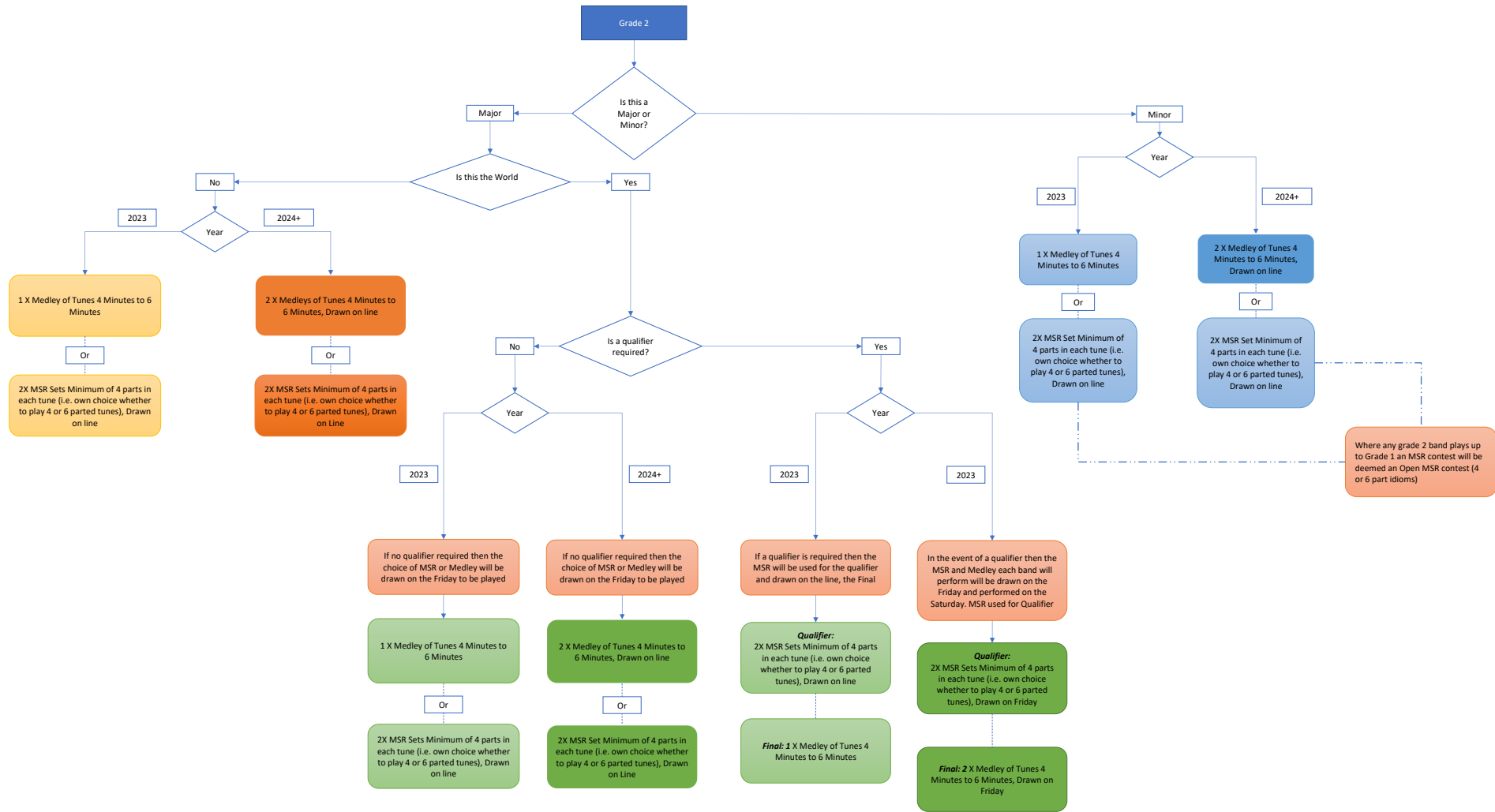
Grade	Current Playing Requirements	Proposed Playing Requirements	Minor proposal	World Championships
Grade 3A	1 X Medley of Tunes 3 Minutes to 5 Minutes Or 1X MSR Set Minimum of 4 parts in each tune (own choice)	1 X Medley of Tunes 4 Minutes to 6 Minutes Or 1X MSR Set Minimum of 4 parts in each tune (own choice) 2 X MSR Sets Minimum of 4 parted tunes (Drawn on line)		If no qualifier required then the choice of MSR or Medley will be drawn on the Friday to be played on Saturday If there is a qualifier then the MSR will be played and the top 6 of each section will play Medley in the final If there is a qualifier then the MSR will be drawn on the line and the top 6 of each section will play Medley in the final

* Where Minimum 4 parted MSR mentioned these are tunes written as four parts and not 2 x two parted tunes



Grade	Current Playing Requirements	Proposed Playing Requirements	Minor proposal	World Championships
Grade 2	1 X Medley of Tunes 4 Minutes to 6 Minutes Or 2X MSR Set Minimum 4 Parted Tunes (Drawn on line)	1 X Medley of Tunes 4 Minutes to 6 Minutes 2 X Medleys of Tunes 4 Minutes to 6 Minutes (Drawn on line) Or 2X MSR Sets Minimum 4 Parted tunes (Drawn on line)	Where any grade 2 band plays up to grade 1 an MSR contest will be deemed an Open MSR contest (4 or 6 part idioms)	If no qualifier required then the choice of MSR or Medley in a straight final will be drawn on the Friday to be played on Saturday (and drawn on the line for the MSR) If a qualifier is required then the MSR will be used for the qualifier and drawn on the line, the Final will be Medley In the event of a qualifier then the MSR and Medley each band will perform will be drawn on the Friday and performed on the Saturday

* Where Minimum 4 parted MSR mentioned these are tunes written as four parts and not 2 x two parted tunes



Grade	Current Playing Requirements	Proposed Playing Requirements	Minor proposal	World Championships
Grade 1	2 x Medleys of tunes (5-7 mins) (Drawn on line) Or 2 x MSR min 4 parted tunes (Drawn on line)	2 x Medleys of tunes (5-7 mins) (drawn on line) Or 1 x MSR Set (Maximum 4 parted tunes) or 1 x MSR Set (Minimum 4 parted tunes) (playing requirement for each Major will be determined by Music Board prior to season)		
Grade 1 (Worlds) with Qualifier (> or = 18 bands)	Day 1 (Friday) Qualifier of 2 heats - MSR (Own choice), Medley (Own Choice) Day 2 (Saturday) Final of 12 bands - MSR (Alternate to Friday), Medley (Alternate to Friday)	Day 1 (Friday) Qualifier of 2 heats - MSR (Maximum 4 parted tunes (4 parted not 2x2)), Medley (Own Choice) Day 2 (Saturday) Final of 12 bands - MSR (Minimum 4 parted tunes), Medley (Alternate to Day 1)	Branches set their own playing requirements according to Competition	
Grade 1 (Worlds) without Qualifier (<18 bands)	Day 1 (Friday) MSR and Medley (Own choice) Day 2 (Saturday) MSR and Medley (Alternate to Day 1)	Day 1 (Friday) MSR (Maximum 4 parted tunes) and Medley (Own choice) Day 2 (Saturday) MSR (Minimum 4 parted tunes) and Medley (Alternate to Day 1)		

* Where Minimum 4 parted MSR mentioned these are tunes written as four parts and not 2 x two parted tunes

